

***Mycenter-2XD***  
***Spark changer***<sup>®</sup>  
Vertical Machining Center



# High Volume Production at your Fingertips. . .

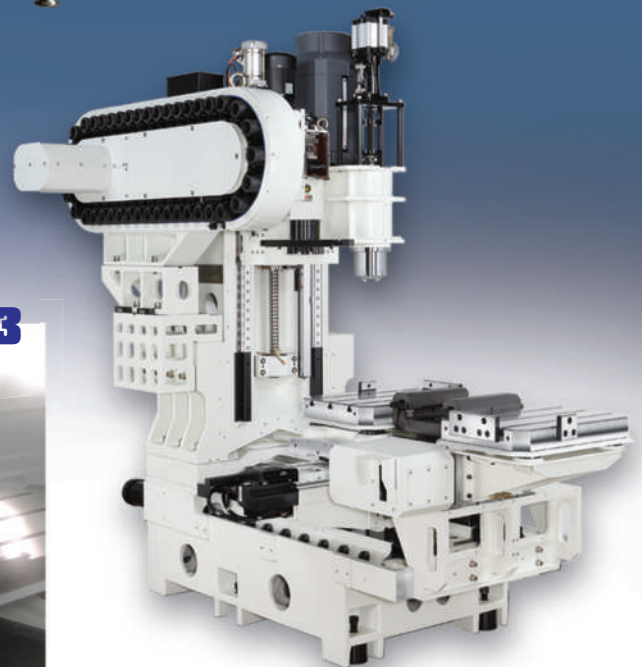
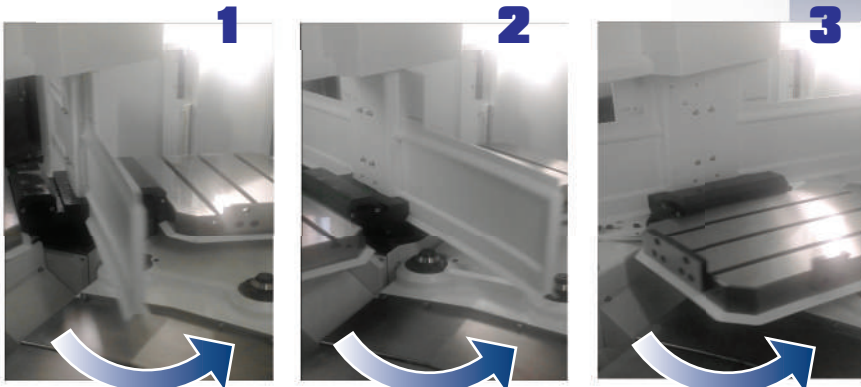
The Mycenter-2XD "Sparkchanger" VMC increases spindle up-time with a high-speed 2-station automatic pallet changer. Designed to allow for load and unload of workpieces when the machine is in cycle, Kitamura "Sparkchangers" offer factory designed & built APC units. Full integration of the pallet changer results in the ultra-compact, space-saving footprint.

The **40-Tool** magazine carries plenty of tools for the completion of complex, multi-fixtured work pieces in one set-up. A powerful, highly precise **35HP, 12,000rpm** dual contact spindle runs low to high rpm for a variety of operations and materials.

**Standout Features Include:**

- Potent and Powerful 35HP 12,000rpm #40 Dual Contact Spindle
- Standard 180° 2-Station Factory Installed Pallet Changer ("Sparkchanger")
- Standard High-Capacity 40 Tool ATC
- Stiff Cast C-Frame Construction with Heavy Duty Cross Roller Linear Guide Way Design for Dynamic, Accurate Movement
- Internal Chip Augers and Standard Hinge Belt Style Chip Conveyor
- Feature-Rich and Powerful *Arumatik-Jr* Controller

***Standard Factory Installed  
2-Station 180° Rotating  
Automatic Pallet Changer. . .  
Easy as. . .***



**Solid, Stiff Cast Construction**

# Arumatik®-Jr CNC Controller

The **Mycenter-2XD Sparkchanger** is equipped with the latest, ultra-high speed, feature-packed Kitamura **Arumatik®-Jr** CNC Control, designed specifically for high quality machining with smoother finishes and faster performance.

Super Smooth Surface (SSS) control ensures high machining stability and quality resulting in optimum accuracy at higher feed rates, shortening machining time up to 30%. A variety of components such as complicated **medical** parts, **automotive** aluminum castings and tougher **aerospace** components can be machined consistently and in the shortest time possible.

## Mycenter®-2XD Spark changer® SPECIFICATIONS

### Table

Table Size	400 x 560mm (15.7" x 22.0")
T-Slot (Width x Qty.)	14mm (0.55") x 3
Max. Table Load	200kg (440 lbs.)

### Travels

X-Axis Travel	600mm (23.6")
Y-Axis Travel	510mm (20.1")
Z-Axis Travel	510mm (20.1")
Distance from Table Top to Spindle Nose	90 to 600mm (3.5" to 23.6")

### Spindle

Spindle Taper	#40 NST
Spindle Speed	12,000min <sup>-1</sup> NRG Belt Drive
Spindle Motor	26kW (35HP AC/Peak)

### Feed

Rapid Feed X, Y	48m/min (1,890ipm)
Rapid Feed Z	42m/min (1,654ipm)
Cutting Feed Rate X,Y, Z	20m/min ( 787ipm)

### ATC

Tool Storage Capacity	40 Tools - BT/CT 40
Tool Selection Method	Memory Random
Max. Tool Size (Dia. x L) (With Adjacent Pots Empty)	Ø 75mm x 250mm (Ø3.0" x 9.7") Ø 127mm x 250mm (Ø5.0" x 9.7")
Max. Tool Weight	7kg (15.4 lbs.)
Tool Change Time (T-T/C-C)	2.5 sec / 5.2 sec min.

### APC

Number of Pallets	2
Pallet Change Time	11.0 sec

### Machine Dimensions

Required Space (W x D)	2,480 x 2,900mm (97.6" x 114.2")
------------------------	----------------------------------



## Control Standard Features

- 675 Block Look-Ahead High-Speed, High-Accuracy Control
- Workpiece Coordinate System – 54 Sets
- Coordinate System Rotation
- Custom Macro Variables, 700 Pieces
- Inverse Time Feed
- Tool Offset Pairs 400 Pairs, 6 Digits
- 3-Dimensional Tool Radius Compensation
- High Speed Skip
- Thread Cutting
- Rigid Tapping
- Small Diameter Deep-Hole Drilling
- Deep-Hole Tapping Cycle
- Scaling
- Helical Interpolation
- Polar Coordinate Command
- Corner Chamfering / Corner Rounding

 **KITAMURA®**  
Machining Challenges-Simplified®

Kitamura Machinery Co., Ltd. (Headquarters)  
Kitamura Machinery of U.S.A., Inc. (Chicago)  
Kitamura Machinery GmbH (Düsseldorf)

[www.kitamura-machinery.co.jp](http://www.kitamura-machinery.co.jp)  
[www.kitamura-machinery.com](http://www.kitamura-machinery.com)  
[www.kitamura-machinery.eu](http://www.kitamura-machinery.eu)

TEL: +81.766.63.1100 FAX: +81.766.63.1128  
TEL: +1.847.520.7755 FAX: +1.847.520.7763  
TEL: +49.211.65.6077 FAX: +49.211.904.7916